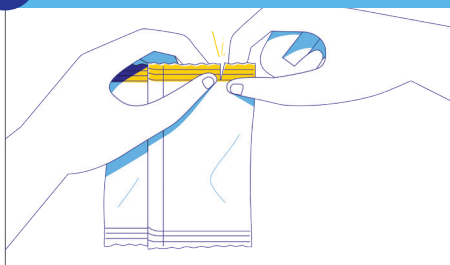


HOW TO USE XIIDRA[®]

PREP WORK

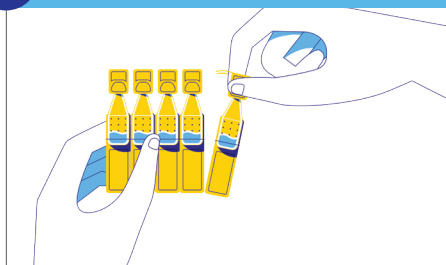
Before you use Xiidra[®], be sure to wash your hands, and if you wear contact lenses, take them out. You can put your lenses back in 15 minutes after you use Xiidra[®].

1 OH SNAP!



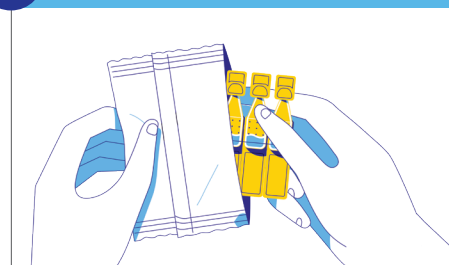
- Take a foil pouch out of the Xiidra[®] box
- Open the pouch and remove the strip of single-use containers

2 TAKE JUST ONE



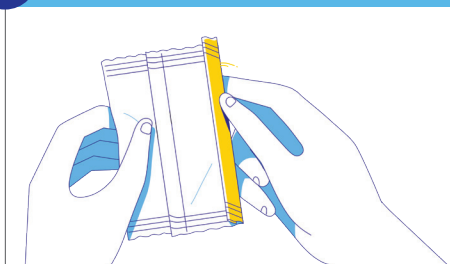
- Pull off one container from the strip

3 NIGHTY NIGHT, EXTRA CONTAINERS



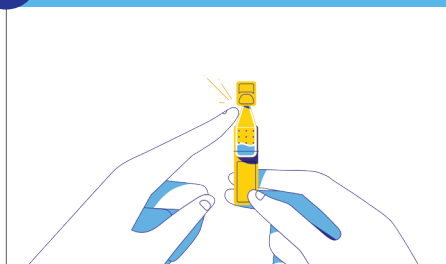
- Put the remaining strip of containers back in the pouch

4 TUCK IT IN



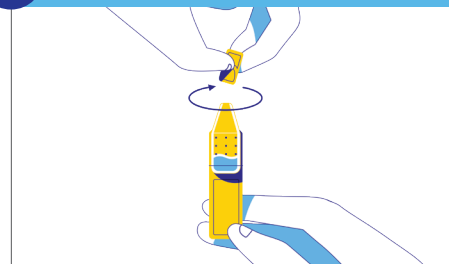
- Fold the edge to close the pouch

5 TAP, TAP, TAP...



- Hold the container upright
- Tap the top of the container until all of the solution is in the bottom part of the container

6 ...THEN TWIST THE CAP



- Twist off the tab to open the container
- Make sure that the tip of the single-use container does not touch anything – this is to help stop contamination

7 TILT YOUR HEAD BACKWARDS



- If you are not able to tilt your head, try lying down

8 LOOK UP TO THE SKY



- Gently pull your lower eyelid downwards – then look up

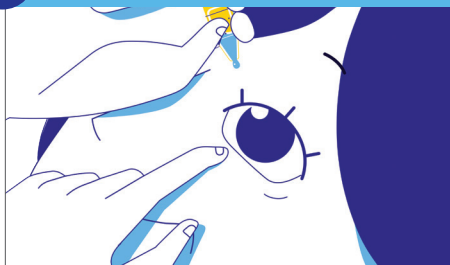
9 GET READY FOR YOUR CLOSE-UP



- Place the tip of the container close to your eye – but be careful not to touch your eye with it

HOW TO USE XIIDRA[®]

10 THE MAIN SQUEEZE



- Gently squeeze the container
- Let one drop fall into the space between your lower eyelid and your eye
- If a drop misses your eye, don't worry, try again

11 GIVE YOUR OTHER EYE A TURN



- Repeat steps 7–10 for your other eye
- There is enough Xiidra[®] in one container for both eyes

ONE MORE THING



- After you have applied a drop to both eyes, throw away the opened container, including any remaining solution
- If you use contact lenses, wait for at least 15 minutes before placing them back in your eyes

What is Xiidra[®]?

Xiidra[®] is an eye drop used to treat the signs and symptoms of Dry Eye Disease.

Important Safety Information

Talk to your eye doctor or other healthcare provider and discuss any health conditions you may have, including if you are:

- Pregnant or plan to become pregnant
- Breastfeeding or plan to breastfeed

Other warnings you should know about:

- Xiidra[®] may cause your vision to blur temporarily when you put the drops in. If you experience blurred vision, wait until your vision clears before you try to drive or operate a machine.

The most common side effects of Xiidra[®] are:

- Eye irritation, eye pain, and/or eye reaction when drops are applied to the eyes
- Unpleasant taste

Other common side effects are:

- Blurred vision
- Headache
- Increase in tears
- Eye redness
- Itchy eyes
- Sensitivity to light

Stop taking Xiidra[®] and seek medical care right away if you experience symptoms of an allergic reaction such as:

- Difficulty breathing or swallowing
- Swelling of tongue, lips and face
- Skin rash, itching and hives

If you have a troublesome symptom or side effect that is not listed here or becomes bad enough to interfere with your daily activities, talk to your healthcare professional.

If you want more information about Xiidra[®]:

- Talk to your healthcare professional
- See the **Patient Medication Information** included with each box of Xiidra[®]

Reference: 1. XIIDRA[®] Product Monograph. Novartis Pharmaceuticals Canada Inc. February 13, 2020.

BAUSCH + LOMB

Bausch + Lomb Corporation

520 Applewood Crescent | www.bausch.ca
Vaughan, ON, L4K 4B4 | T: 1-888-459-5000

XDR.0005.CA.23-EN

XIIDRA[®] is a registered trademark of Novartis AG used under license by Bausch + Lomb Corporation.
© 2024 Bausch + Lomb Corporation. All rights reserved.

